



799H000004 *Riverdown*

UNSTOPABULL-RED

RW A1A1 AE CDF
CVF BYF BLF DPF

Reg: HOCANM11801450 / DOB: 06/12/2016 / RHA: 99% / aAa: 243165

Kodnr: 9-799

Pris 350
XX 680

SIRE
DYMENTHOLM MR APPLES AVALANCHE *RC

DAM
CHERRY CREST THATS NEAT EX-91-3E 9*
sired by Marbri Applejack Red

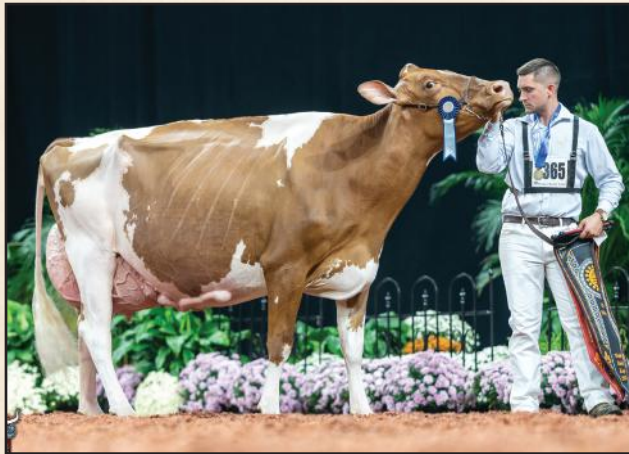
6-02 2x 305 d 15,266 Kg M 3.9%F 3.2%P

2ND DAM
SERENITYHILL NIAGRA ROZ EX-2E 15*
sired by Ri-Val-Re 2338 Niagra

4-06 2x 305 d 11,927 Kg M 4.0%F 3.2%P

3RD DAM
CHERRY CREST FINAL CUT ROZ VG-88
2-04 2x 305 d 9,872 Kg M 4.5%F 3.2%P

4TH - 9TH DAMS
EX-91-2E 6* x EX-95-2E DOM 2* x
EX-93-2E x EX-91-2E x EX x VG-88

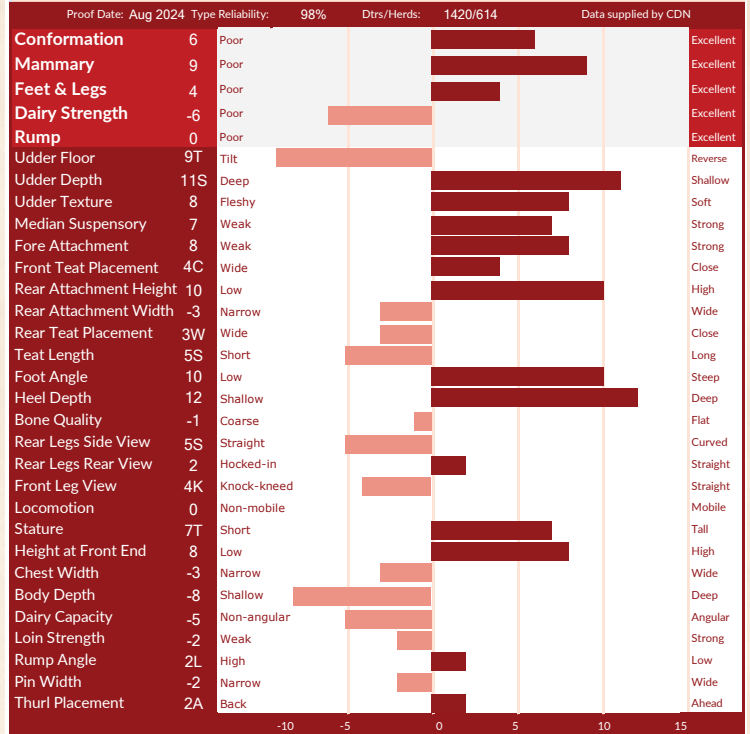


DAUGHTER: MS RANSOM-RAIL BETH *image © bullvine.com*
Reserve Grand, Sr and Champion Bred & Owned World Dairy Expo 2023
Senior & Grand Champion Red & White World Dairy Expo 2022
Owned by Milksource, Ransom-Rail and L Fischer



DAUGHTER: MS TRIPLE-T-TL FAME-RED *image © bullvine.com*
1st Jr 3 Yr-Old & Res. Intermediate Champion Royal 2023
1st Jr 3 Yr-Old & HM Intermediate Champion World Dairy Expo 2023
Owned by Oakfield Corners Dairy, NY

CANADIAN FIGURES			
Lifetime Performance		Rel 97%	Dtrs/ Herds 1686/700
GPA LPI	+2508	Feed Efficiency	104
PRO \$	\$191	Herd Life	104
Production	Rel 99%	Mastitis Resistance	100
Milk	-590 kgs	Metabolic Disease	91
Fat	-43 kgs -0.17%	Hoof Health	99
Protein	-33 kgs -0.11%	Lactation Persistency	99
Functional Traits		Daughter Fertility	100
		Milking Speed	101
		Milking Temperament	107
		Calving Ability	96
		Dtr Calving Ability	105
		Body Condition	105



AMERICAN FIGURES			
Lifetime Performance		Functional Traits	
GTPI	+1952	Somatic Cell Score	2.96
NET MERIT	-\$194	Productive Life	1.4
Production	Rel: 99%	Daughter / Herds	5906/2033
Milk	-183 lbs	Combined F&P	-38 lbs
Fat	-19 lbs -0.05%	Cheese Merit	-\$201
Protein	-19 lbs -0.05%	Daughter Preg Rate	0.9
		Sire Calving Ease	3.5%
		Dtr Calving Ease	2.4%
		Sire Stillbirth	9.4%
		Dtr Stillbirth	6.6%
		Fertility Index	0.04

