

MYSTIQUE MCCUTCHEN APRIL EX-93-2E 3*
3rd Dam

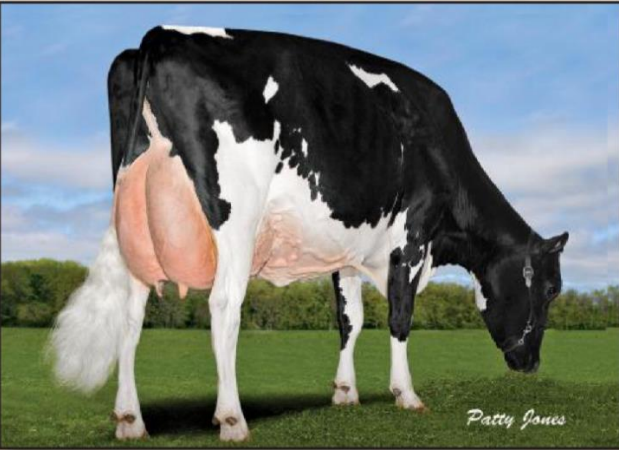
SIRE
SIEMERS ROZUME

DAM
MYSTIQUE LAMBDA ANIS VG-89
sired by Farnear Delta-Lambda-ET
1-10 2x 305 d 11,197 Kg M 4.3%F 3.6 P

2ND DAM
MYSTIQUE EXTREME ABRICOT EX-94-3E 5*
sired by Siloverridge V Extreme
3-01 2x 305 d 13,563 Kg M 4.2%F 3.3%P

3RD DAM
MYSTIQUE MCCUTCHEN APRIL EX-93-2E 3*
6-07 2x 305 d 15,885 Kg M 3.6%F 2.8%P

4TH - 13TH DAMS
VG-88 13* X EX-2E 12* X VG-88-2YR 4* X EX-94-3E 13*
X EX-6E 14* X VG-87 4* X
VG-86 X EX 19* X VG-88 10* X EX



MYSTIQUE GOLDWYN ARABI EX-2E-11*
Lifetime production - 109 091 Kg M 4.7%F 3.8%P
5th Dam

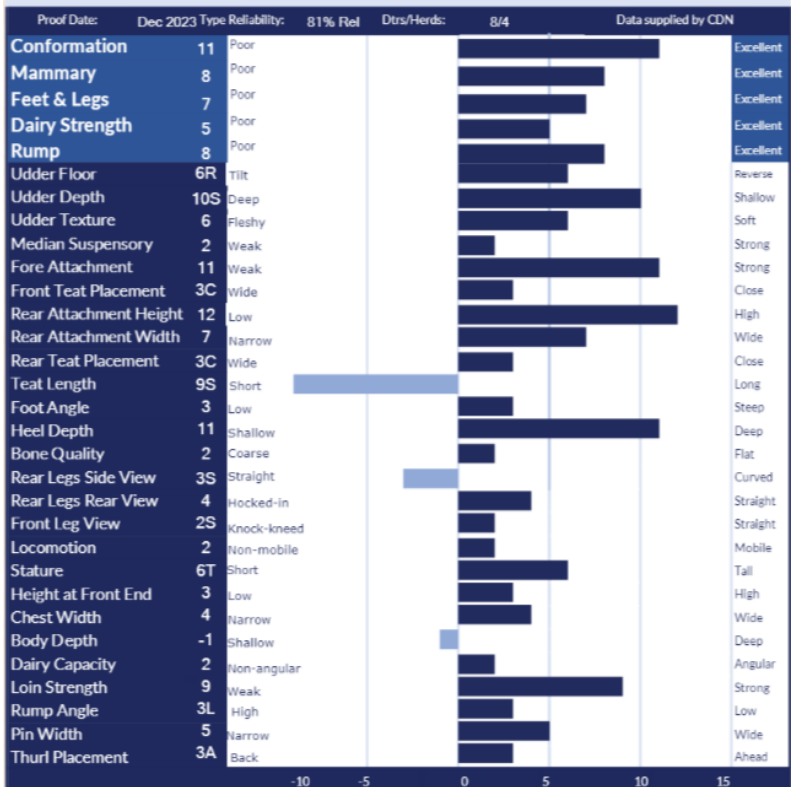
Blondin
SIRE

Pris
Pris Sexad

Avenger

Kod nr aAa

| CANADIAN FIGURES | | | | | | |
|----------------------|---------------|-----------------------|-------------|------|---------------------|-----|
| Lifetime Performance | | Rel 80% | Dtrs/ Herds | 14/8 | Functional Traits | |
| GPA LPI | +3392 | Feed Efficiency | | 100 | Daughter Fertility | 97 |
| PRO \$ | \$2212 | Herd Life | | 106 | Milking Speed | 94 |
| Production | Rel: 84% | Mastitis Resistance | | 104 | Milking Temperament | 101 |
| Milk | 1034 kgs | Metabolic Disease | | 103 | Calving Ability | 99 |
| Fat | 73 kgs +0.29% | Hoof Health | | 110 | Dtr Calving Ability | 100 |
| Protein | 38 kgs +0.02% | Lactation Persistency | | 102 | Body Condition | 103 |



| AMERICAN FIGURES | | | | | | |
|----------------------|---------------|--------------------|--|--------|--------------------|------|
| Lifetime Performance | | Functional Traits | | | | |
| GTEI | +2513 | Somatic Cell Score | | 2.78 | Daughter Preg Rate | -2.6 |
| NET MERIT | \$377 | Productive Life | | 2.2 | Sire Calving Ease | 2.4% |
| Production | Rel: 82% | | | | Dtr Calving Ease | 2.2% |
| Milk | 683 lbs | Daughter / Herds | | 0/0 | Sire Stillbirth | 6.1% |
| Fat | 54 lbs +0.10% | Combined F&P | | 75 lbs | Dtr Stillbirth | 6.1% |
| Protein | 21 lbs 0.00% | Cheese Merit | | \$382 | Fertility Index | -2 |

