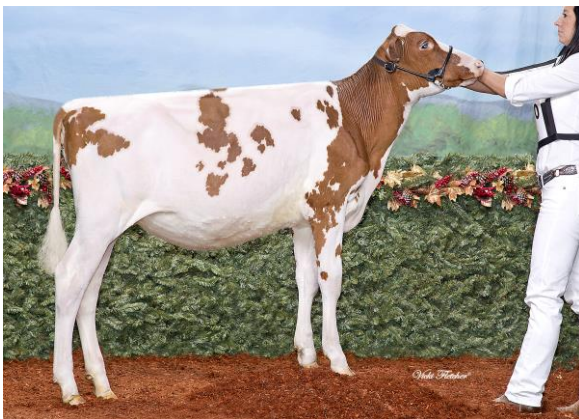


Blondin RD UNSTOPABULL MAPLE-EX-94
 GRAND CHAMPION R&W, B&W AND SUPREME CHAMPION 100TH ANNIVERSARY ROYAL 2022
 RES. GRAND CHAMPION INTERMEDIATE CHAMPION B&W HOLSTEIN WORLD DAIRY EXPO 2022
 CONGRATULATIONS TO R & F LIVESTOCK, WILLIAM SCHILLING, KEVIN DOEBERHNER AND LINDSAY BOWEN AND BORDERVIEW GENETICS

Unstopabull-Red

Kod nr 9-7989 aAa 243165

SIRE
DYMENTHOLM MR APPLES AVALANCHE *RC
 DAM
CHERRY CREST THATS NEAT EX-91-3E 7*
sired by Marbri Applejack Red
 6-02 2x 305 d 15,266 Kg M 3.9%F 3.2%P
 2ND DAM
SERENITYHILL NIAGRA ROZ EX-2E 15*
sired by Ri-Val-Re 2338 Niagra
 4-06 2x 305 d 11,927 Kg M 4.0%F 3.2%P
 3RD DAM
CHERRY CREST FINAL CUT ROZ VG-88
 2-04 2x 305 d 9,872 Kg M 4.5%F 3.2%P
 4TH - 9TH DAMS
EX-91-2E 6* X **EX-95-2E DOM 2*** X
EX-93-2E X **EX-91-2E** X **EX** X **VG-88**



Blondin Unstopabull Sephora



Pris 375
 Pris Sexad 690

GGI Sweden 0705983191

CANADIAN FIGURES					
Lifetime Performance		Rel 96%	Dtrs/ Herds 1473/638	Functional Traits	
GPA LPI	+2512	Feed Efficiency	104	Daughter Fertility	100
PRO \$	\$476	Herd Life	103	Milking Speed	102
Production		Rel 99%	Mastitis Resistance	100	Milking Temperament
Milk	-361 kgs	Metabolic Disease	92	Calving Ability	97
Fat	-32 kgs -0.16%	Hoof Health	99	Dtr Calving Ability	104
Protein	-23 kgs -0.09%	Lactation Persistency	101	Body Condition	105

CANADIAN FIGURES					
Proof Date: Dec 2023		Type Reliability: 98% Rel	Dtrs/Herds: 1218/548	Data supplied by CDN	
Conformation	6	Poor			Excellent
Mammary	9	Poor			Excellent
Feet & Legs	4	Poor			Excellent
Dairy Strength	-6	Poor			Excellent
Rump	0	Poor			Excellent
Udder Floor	9T	Tilt			Reverse
Udder Depth	11S	Deep			Shallow
Udder Texture	8	Fleshy			Soft
Median Suspensory	8	Weak			Strong
Fore Attachment	9	Weak			Strong
Front Teat Placement	5C	Wide			Close
Rear Attachment Height	11	Low			High
Rear Attachment Width	-2	Narrow			Wide
Rear Teat Placement	2W	Wide			Close
Teat Length	6S	Short			Long
Foot Angle	11	Low			Steep
Heel Depth	12	Shallow			Deep
Bone Quality	0	Coarse			Flat
Rear Legs Side View	5S	Straight			Curved
Rear Legs Rear View	2	Hocked-in			Straight
Front Leg View	5K	Knock-kneed			Straight
Locomotion	1	Non-mobile			Mobile
Stature	8T	Short			Tall
Height at Front End	8	Low			High
Chest Width	-3	Narrow			Wide
Body Depth	-8	Shallow			Deep
Dairy Capacity	-4	Non-angular			Angular
Loin Strength	-2	Weak			Strong
Rump Angle	2L	High			Low
Pin Width	-2	Narrow			Wide
Thurl Placement	2A	Back			Ahead

AMERICAN FIGURES					
Lifetime Performance		Functional Traits			
GTPI	+1958	Somatic Cell Score	2.96	Daughter Preg Rate	1.1
NET MERIT	\$-210	Productive Life	1.8	Sire Calving Ease	3.5%
Production		Rel: 99%	Daughter / Herds	4892/1781	Dtr Calving Ease
Milk	-382 lbs	Combined F&P	-47 lbs	Sire Stillbirth	9.3%
Fat	-23 lbs -0.03%	Cheese Merit	\$-216	Dtr Stillbirth	7.1%
Protein	-24 lbs -0.04%			Fertility Index	0.9

AMERICAN FIGURES					
Proof Date: Dec 2023		Type Reliability: 99% Rel	Dtrs/Herds: 3317/1395	Data supplied by Holstein USA	
PTAT	2.03	Poor			Excellent
UDC	2.03	Poor			Excellent
FLC	1.28	Poor			Excellent
BSC	1.33	Poor			Excellent
Stature	2.61	Short			Tall
Strength	0.82	Weak			Strong
Body Depth	0.43	Shallow			Deep
Dairy Form	0.01	Coarse			Open Rib
Rump Angle	0.58	High			Sloped
Thurl Width	0.67	Narrow			Wide
Rear Legs-Side	-1.12	Straight			Sickle
Rear Legs-Rear	2.51	Sickle			Straight
Foot Angle	2.79	Low			Steep
Feet & Legs Score	1.48	Low			High
F. Udder Attachment	3.05	Weak			Strong
Rear Udder Height	3.25	Low			High
Rear Udder Width	1.50	Narrow			Wide
Udder Cleft	1.32	Weak			Strong
Udder Depth	3.11	Deep			Shallow
Front Teat Placement	1.14	Apart			Close
Rear Teat Placement	0.80	Apart			Close
Teat Length	-1.04	Short			Long