



799H000086 *Hamming*  
**SALUTE**



Reg: HOCANM14344784 / DOB: 01/10/2022 / BW A2A2 CDF CVF RDF BYF BLF DPF CNF / aAa 243615

**Kodnr:**

SIRE  
**MYSTIQUE AVENGER**

DAM  
**HAMMING CHIEF SHADE EX-92-5YR**  
*sired by Stantons Chief*

03-01 2x 305 d 15,033 Kg M 4.4%F 3.5%P

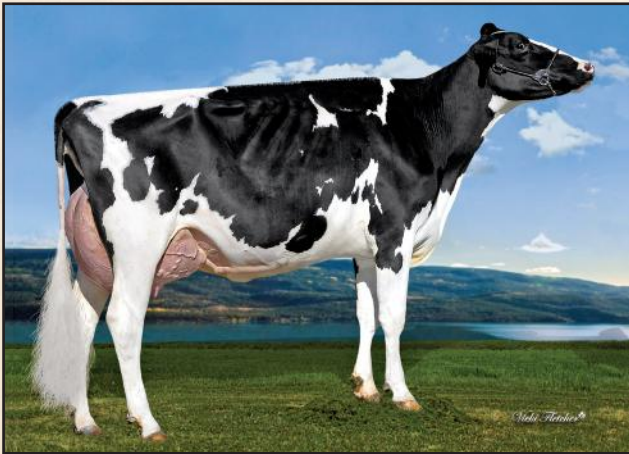
2ND DAM  
**HAMMINGVIEW DOORMAN SUNSHINE EX-93-2E 2\***  
*sired by Val-Bisson Doorman*

04-02 2x 305 d 14,547 Kg M 4.7%F 3.6%P

3RD DAM  
**HAMMINGVIEW NUMERO UNO MONTANA VG-85-3YR 3\***  
 03-00 2x 305 d 10,758 Kg M 3.9%F 3.3%P

4TH - 6TH DAMS  
**EX-92-5\* x VG-87-8\* x VG-89-3YR-14\***

Pris 350  
 XX 660



**HAMMING CHIEF SHADE EX-92-5YR**  
 Dam



DAUGHTER HODGLYNN SALUTE LEGACY  
 Owned by Hodglynn Holstein & Savannah & Kolton Crack

CANADIAN FIGURES					
Lifetime Performance		Rel 81%	Dtrs/ Herds	Functional Traits	
GPA LPI	+3453	Feed Efficiency	100	Daughter Fertility	98
PRO \$	\$1365	Herd Life	103	Milking Speed	90
Production	Rel 84%	Mastitis Resistance	103	Milking Temperament	97
Milk	537 kgs	Metabolic Disease	102	Calving Ability	96
Fat	52 kgs +0.28%	Hoof Health	113	Dtr Calving Ability	98
Protein	29 kgs +0.09%	Lactation Persistency	104	Body Condition	105

Proof Date:	Aug 2024	Type Reliability:	82%	Dtrs/Herds:	/	Data supplied by CDN
Conformation	16	Poor				Excellent
Mammary	12	Poor				Excellent
Feet & Legs	7	Poor				Excellent
Dairy Strength	11	Poor				Excellent
Rump	12	Poor				Excellent
Udder Floor	1R	Tilt				Reverse
Udder Depth	7S	Deep				Shallow
Udder Texture	9	Fleshy				Soft
Median Suspensory	5	Weak				Strong
Fore Attachment	13	Weak				Strong
Front Teat Placement	4C	Wide				Close
Rear Attachment Height	14	Low				High
Rear Attachment Width	11	Narrow				Wide
Rear Teat Placement	7C	Wide				Close
Teat Length	6S	Short				Long
Foot Angle	6	Low				Steep
Heel Depth	9	Shallow				Deep
Bone Quality	5	Coarse				Flat
Rear Legs Side View	1C	Straight				Curved
Rear Legs Rear View	0	Hocked-in				Straight
Front Leg View	1S	Knock-kneed				Straight
Locomotion	-1	Non-mobile				Mobile
Stature	7T	Short				Tall
Height at Front End	7	Low				High
Chest Width	6	Narrow				Wide
Body Depth	5	Shallow				Deep
Dairy Capacity	6	Non-angular				Angular
Loin Strength	14	Weak				Strong
Rump Angle	5L	High				Low
Pin Width	7	Narrow				Wide
Thurl Placement	7A	Back				Ahead

AMERICAN FIGURES			
Lifetime Performance		Functional Traits	
GTPi	+2508	Somatic Cell Score	2.77
NET MERIT	\$272	Productive Life	1.0
Production	Rel: 81%	Daughter / Herds	0/0
Milk	481 lbs	Daughter Preg Rate	-2.4
Fat	49 lbs +0.12%	Sire Calving Ease	2.8%
Protein	25 lbs +0.04%	Dtr Calving Ease	2.7%
		Sire Stillbirth	6.9%
		Dtr Stillbirth	6.2%
		Fertility Index	-2.27

Proof Date:	Aug 2024	Type Reliability:	79%	Dtrs/Herds:	0/0	Data supplied by Holstein USA
PTAT	3.15	Poor				Excellent
UDC	3.07	Poor				Excellent
FLC	0.65	Poor				Excellent
BSC	1.41	Poor				Excellent
Stature	2.65	Short				Tall
Strength	1.49	Weak				Strong
Body Depth	1.63	Shallow				Deep
Dairy Form	1.66	Coarse				Open Rib
Rump Angle	0.96	High				Sloped
Thurl Width	2.22	Narrow				Wide
Rear Legs-Side	0.32	Straight				Sickle
Rear Legs-Rear	0.79	Sickle				Straight
Foot Angle	1.66	Low				Steep
Feet & Legs Score	1.24	Low				High
F. Udder Attachment	4.06	Weak				Strong
Rear Udder Height	4.22	Low				High
Rear Udder Width	3.89	Narrow				Wide
Udder Cleft	1.93	Weak				Strong
Udder Depth	3.14	Deep				Shallow
Front Teat Placement	1.31	Apart				Close
Rear Teat Placement	1.64	Apart				Close
Teat Length	-1.10	Short				Long