

799H000074 *Terra-Linda*  
**ROCKET**



KODNR: 9-9015

Reg: H0840M3243358080 / DOB: 10/11/2021 / ET BW POF A2A2 BB CDF RDF VRF BLF DPF CNF / aAa: 351426



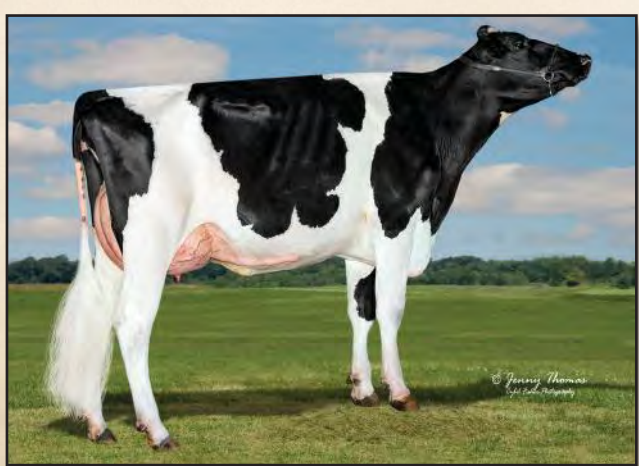
**SIRE**  
**SIEMERS RENGD PARFECT**

**DAM**  
**TERRA-LINDA DOC 794 EX-90**  
*sired by Woodcrest King Doc*

**2ND DAM**  
**TRIFECTA K CONNIE VG-85-2YR**  
*sired by Sandy-Valley Crackshot*

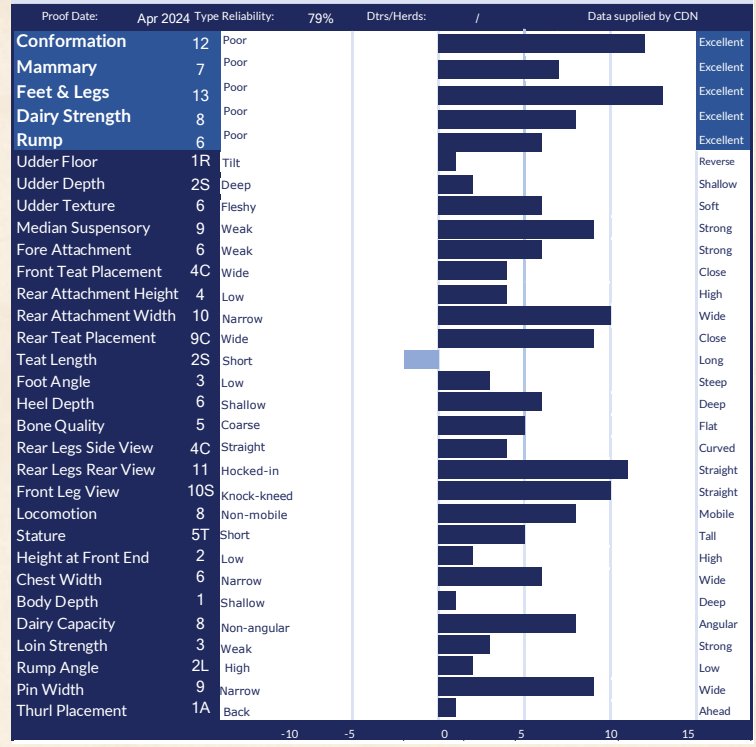
**3RD DAM**  
**TRIPLECROWN KINGBOY 6 VG-86-3YR**  
 3-02 2x 359 d 14,869 Kg M 3.7%F 3.4%P

**4TH - 12TH DAMS**  
**VG-87-3YR X VG-87 X VG-88 X**  
 Scientific Debutante Rae EX92-2E 3\* GMD DOM  
 X EX-90 DOM X EX-96-3E 5\* GMD DOM  
 X EX-94-2E GMD DOM X EX-90 30\* GMD DOM  
 X Glenridge Citation Roxy EX-97-4E 6\* GMD  
 X EX-90 6\* GMD X VG-85 5\*



**TERRA-LINDA DOC 794 EX-90** Pris 306  
 Dam XX 650

CANADIAN FIGURES					
Lifetime Performance			Functional Traits		
<b>GPA LPI</b>	<b>+3460</b>	Rel 79%	Dtrs/ Herds	/	
<b>PRO \$</b>	<b>\$2106</b>	Feed Efficiency	102	Daughter Fertility	99
<b>Production</b>	Rel 83%	Mastitis Resistance	101	Milking Speed	101
<b>Milk</b>	1251 kgs	Metabolic Disease	100	Milking Temperament	97
<b>Fat</b>	69 kgs +0.16%	Hoof Health	96	Calving Ability	103
<b>Protein</b>	50 kgs +0.05%	Lactation Persistency	99	Dtr Calving Ability	108
				Body Condition	98



AMERICAN FIGURES					
Lifetime Performance			Functional Traits		
<b>GTPI</b>	<b>+2888</b>	Somatic Cell Score	2.92	Daughter Preg Rate	-1.3
<b>NET MERIT</b>	<b>\$703</b>	Productive Life	3.5	Sire Calving Ease	1.8%
<b>Production</b>	Rel: 82%	Daughter / Herds	0/0	Dtr Calving Ease	1.4%
<b>Milk</b>	1321 lbs	Combined F&P	130 lbs	Sire Stillbirth	6.1%
<b>Fat</b>	80 lbs +0.10%	Cheese Merit	\$710	Dtr Stillbirth	4.0%
<b>Protein</b>	50 lbs +0.03%			Fertility Index	-0.8

