



DINOMI OFFROAD RYLEY-ET, EX-94 2E  
5th Dam

# Rebell

Kod nr 9-8639 aAa 132654

12/2023	CDCB SUMMARY GENOMIC				NM\$ +169
Milk	+355	82%R	Cheese Merit \$		+174
Fat	+8	-0.02%	FM\$ +148		GM\$ +129
Protein	+14	+0.01%	Gestation Len +0		MSP +103
CFP (lbs)	+22		EFI 9.2% GFI 11.0%		
SCS	2.84	78%R	Mastitis +0.3		Fert. Index +0.3
PL	+2.0	77%R	PTA Liv -1.5		Heifer Liv. +0.5
DPR	-0.3	77%R	HCR +3.1		CCR -0.7
RFI	+1				
Feed Saved	-192	47%R		0 Dtrs 0 Herds	100% US

12/2023	CALVING SUMMARY			SCE 2.3 %
Sire Calving Ease	2.3%	84%R		137 Obs
Daughter Calving Ease	2.5%	70%R		0 Obs
Sire Stillbirth	6.7%	77%R		135 Obs
Daughter Stillbirth	5.9%	65%R		0 Obs

12/2023	HA TYPE SUMMARY				TPI +2392
PTAT +3.02	81%R	UDC+2.55	FLC+1.56	BSC+1.26	0 D / 0 H
Stature	+3.29	Tall			
Strength	+1.47	Strong			
Body Depth	+2.13	Deep			
Dairy Form	+2.34	Open			
Rump Angle	-0.68	High Pins			
Thurl Width	+2.21	Wide			
Rear Legs-Side	-0.32	Posty			
Rear Legs-Rear	+2.23	Straight			
Foot Angle	+2.47	Steep			
Feet & Legs Score	+2.09	High			
Fore Udder Attachment	+3.48	Strong			
Rear Udder Height	+3.79	High			
Rear Udder Width	+2.95	Wide			
Udder Cleft	+1.35	Strong			
Udder Depth	+3.25	Shallow			
F. Teat Placement	+1.62	Close			
Rear Teat Placement	+1.08	Close			
Teat Length	+0.02	Long			

SIRE  
TRENT-WAY-JS RONALD-ET RC

DAM  
DINOMI UNDENIED KAY 11942 VG-87 2YR  
sired by *Our-Favorite Undenied*  
2-01 2x 305 d 10,274 Kg M 4.7%F 3.6%P

2ND DAM  
DINOMI MNTRY KAHLI 10981 VG-86-2Y  
sired by *View-Home Monterey*  
2-00 2x 232 d 8,672 Kg M 4.0%F 3.2%P

3RD DAM  
DINOMI DRMAN RYLEY-ET EX-90  
1-11 2x 365 d 15,276 Kg M 4.4%F 3.3%P

4TH - 11TH DAMS  
EX-90 X EX-94-2E GMD  
X VG-89 GMD\*  
X EX-90 DOM X EX-90  
X MARKWELL BSTAR E RAVEN EX-95-3E GMD DOM 5\*  
X EX-92-4E GMD DOM 3\*  
X EX-94-4E GMD DOM

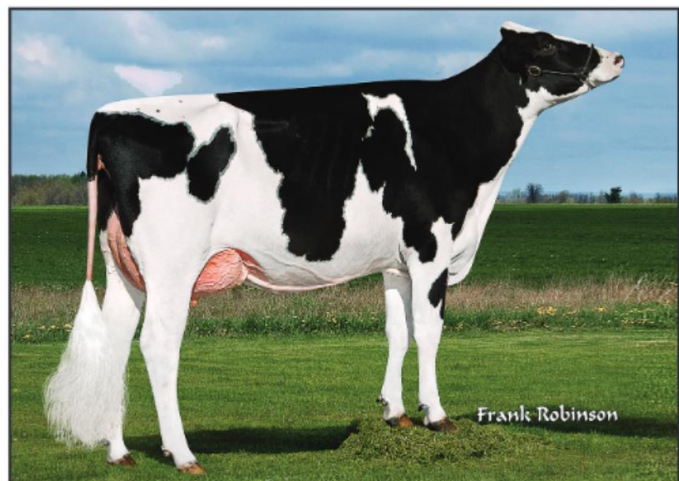
ROBOT

PTAT +3.02

TPI +2392



Pris 360  
GGI Sweden 0705983191



DINOMI DRMAN RYLEY-ET EX-90  
3rd Dam