

799H00080 *Hoaglyer*

MAXIMUM-RED

Reg: HOCANM14156509 / DOB: 11/07/2021 / ET RW A1A2 AA CDF VRF BLF DPF CNF / aAa: 423561 **Kodnr: 9-9013**

SIRE
FARNEAR ALTITUDE-RED

DAM
BLONDIN RD UNSTOPABULL MAPLE-RED EX-94
sired by Riverdown Unstopabull-Red

Grand Champion B&W and R&W Royal Winter Fair 2022
Int. Champion and Res. Grand Champion World Dairy Expo 2022
Intermediate Champion National R&W Show 2021

All-Canadian B&W and R&W Sr. 2-Yr-Old 2021
1-09 2x 305 d 10,645 Kg M 3.8%F 2.0%P

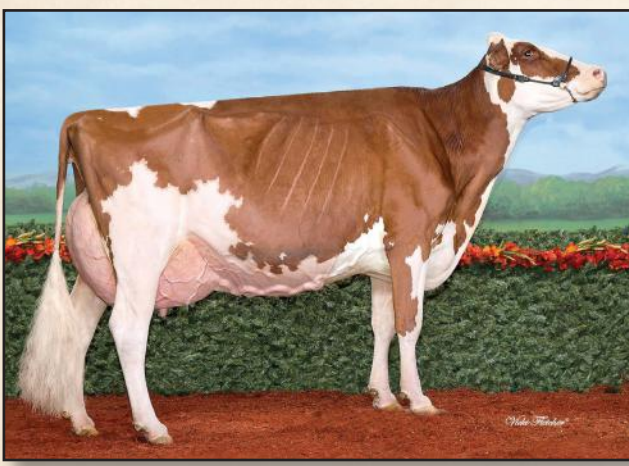
2ND DAM
KAWARTHA ARMANI MEMORY EX-92
sired by Mr Apples Armani

1st 5yr. old R&W Fall Invitational 2020
05-03 2x 305 d 13,336 Kg M 4.5%F 3.2%P

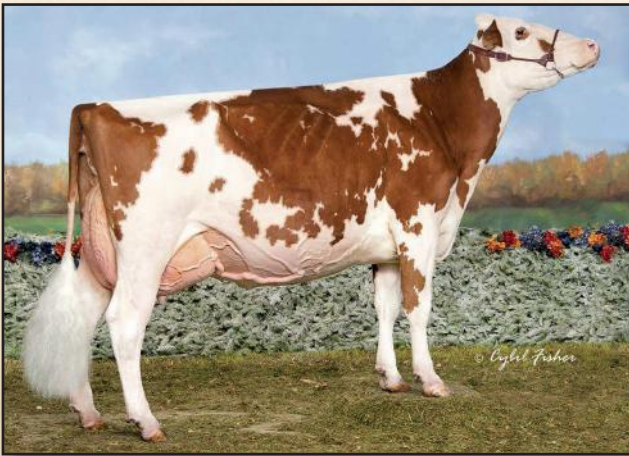
3RD DAM
LOCHDALE SHAQUILLE MISSY EX-93-2E
Reserve All-Canadian Red & White Jr 3-Yr-Old 2013
1st Junior 3yr. old & Intermediate Champion, Royal Winter Fair 2013
05-11 2x 305 d 14,656 Kg M 3.8%F 2.9%P

4TH - 7TH DAMS
GP-84-2YR 3* X VG-85 X EX-90-6E X EX-90-2E 9*

Pris XX 690

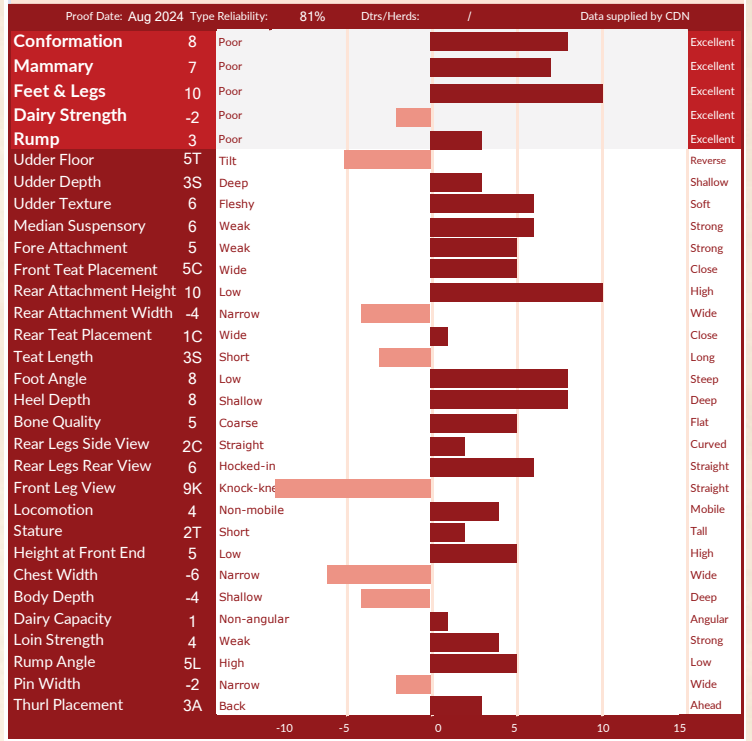


KAWARTHA ARMANI MEMORY EX-92
2nd Dam



LOCHDALE SHAQUILLE MISSY EX-93-2E
3rd Dam

CANADIAN FIGURES			
Lifetime Performance		Rel 80%	Dtrs/ Herds
GPA LPI	+2548	Feed Efficiency	99
PRO \$	\$99	Herd Life	104
Production	Rel 84%	Mastitis Resistance	100
Milk	-461 kgs	Metabolic Disease	91
Fat	-21 kgs -0.02%	Hoof Health	101
Protein	-23 kgs -0.05%	Lactation Persistency	100
		Daughter Fertility	93
		Milking Speed	102
		Milking Temperament	105
		Calving Ability	95
		Dtr Calving Ability	103
		Body Condition	99



AMERICAN FIGURES			
Lifetime Performance		Functional Traits	
GTPI	+2069	Somatic Cell Score	2.89
NET MERIT	-\$37	Productive Life	1.1
Production	Rel: 82%	Daughter / Herds	0/0
Milk	54 lbs	Combined F&P	0 lbs
Fat	5 lbs +0.01%	Cheese Merit	-\$38
Protein	-5 lbs -0.03%	Daughter Preg Rate	-1.4
		Sire Calving Ease	4.3%
		Dtr Calving Ease	3.1%
		Sire Stillbirth	7.7%
		Dtr Stillbirth	5.4%
		Fertility Index	-2.45

