

799H000087 *Tappenvale*
MALBEC

KODNR: 9-9112

Reg: HOCANM14289610 / DOB: 01/16/2022 / ET BW A1A2 AE CDF RDF VRF BLF DPF CNF / aAa: 342156



SIRE
STANTONS ALLIGATOR-ET

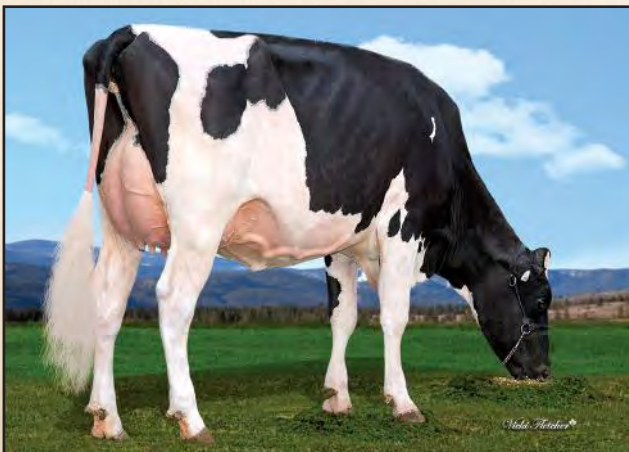
DAM
TAPPENVALE DRIFTER MERLOT VG-86 2YRS
sired by Aardema Drifter
02-00 2X 305 D 10,801 KG M 4.2%F 3.4%P

2ND DAM
TAPPENVALE MISS UNIVERSE EX-92-2*
sired by Walnutlawn Sidekick
03-04 2x 305 d 11,986 Kg M 5.5%F 3.7%P

3RD DAM
TAPPENVALE DOORMAN MISSY VG-87 1*
04-07 2x 305 d 11,548 Kg M 3.8%F 3.8%P

4TH - 11TH DAMS
EX-91-3E 1* X EX-91-5E 12* X VG-86-2YR 17* X
VG-86-3YR 2* X VG-87-3YR X VG-87-3YR 1*
X VG-85-3YR 2* X EX-90 3*

Pris endast sexad: 620



TAPPENVALE DRIFTER MERLOT VG-86 2YRS
Dam

CANADIAN FIGURES					
Lifetime Performance			Functional Traits		
GPA LPI	+3398	Rel 84%	Dtrs/ Herds	/	
PRO \$	\$1349	Feed Efficiency	103	Daughter Fertility	103
Production	Rel 86%	Mastitis Resistance	99	Milking Speed	98
Milk	426 kgs	Metabolic Disease	102	Milking Temperament	98
Fat	53 kgs +0.33%	Hoof Health	94	Calving Ability	96
Protein	25 kgs +0.09%	Lactation Persistency	100	Dtr Calving Ability	98
				Body Condition	96

CANADIAN FIGURES (Continued)					
Proof Date: Apr 2024 Type Reliability: 84% Dtrs/Herds: / Data supplied by CDN					
Conformation	14	Poor			Excellent
Mammary	10	Poor			Excellent
Feet & Legs	9	Poor			Excellent
Dairy Strength	14	Poor			Excellent
Rump	6	Poor			Excellent
Udder Floor	9R	Tilt			Reverse
Udder Depth	1S	Deep			Shallow
Udder Texture	11	Fleshy			Soft
Median Suspensory	11	Weak			Strong
Fore Attachment	4	Weak			Strong
Front Teat Placement	0	Wide			Close
Rear Attachment Height	10	Low			High
Rear Attachment Width	12	Narrow			Wide
Rear Teat Placement	1C	Wide			Close
Teat Length	0	Short			Long
Foot Angle	7	Low			Steep
Heel Depth	9	Shallow			Deep
Bone Quality	7	Coarse			Flat
Rear Legs Side View	7C	Straight			Curved
Rear Legs Rear View	6	Hocked-in			Straight
Front Leg View	5S	Knock-kneed			Straight
Locomotion	4	Non-mobile			Mobile
Stature	8T	Short			Tall
Height at Front End	9	Low			High
Chest Width	6	Narrow			Wide
Body Depth	10	Shallow			Deep
Dairy Capacity	12	Non-angular			Angular
Loin Strength	8	Weak			Strong
Rump Angle	1H	High			Low
Pin Width	11	Narrow			Wide
Thurl Placement	2B	Back			Ahead

AMERICAN FIGURES					
Lifetime Performance			Functional Traits		
GTPI	+2560	Somatic Cell Score	2.87	Daughter Preg Rate	-1.1
NET MERIT	\$356	Productive Life	0.0	Sire Calving Ease	3.1%
Production	Rel: 82%	Daughter / Herds	0/0	Dtr Calving Ease	3.1%
Milk	593 lbs	Combined F&P	94 lbs	Sire Stillbirth	6.7%
Fat	65 lbs +0.15%	Cheese Merit	\$365	Dtr Stillbirth	5.9%
Protein	29 lbs +0.04%			Fertility Index	-0.3

AMERICAN FIGURES (Continued)					
Proof Date: Apr 2024 Type Reliability: 80% Dtrs/Herds: 0/0 Data supplied by Holstein USA					
PTAT	2.79	Poor			Excellent
UDC	2.07	Poor			Excellent
FLC	0.57	Poor			Excellent
BSC	1.02	Poor			Excellent
Stature	2.86	Short			Tall
Strength	1.58	Weak			Strong
Body Depth	2.19	Shallow			Deep
Dairy Form	2.92	Coarse			Open Rib
Rump Angle	-0.57	High			Sloped
Thurl Width	2.51	Narrow			Wide
Rear Legs-Side	2.22	Straight			Sickle
Rear Legs-Rear	0.86	Sickle			Straight
Foot Angle	0.94	Low			Steep
Feet & Legs Score	1.34	Low			High
F. Udder Attachment	2.37	Weak			Strong
Rear Udder Height	3.60	Low			High
Rear Udder Width	3.40	Narrow			Wide
Udder Cleft	2.06	Weak			Strong
Udder Depth	1.45	Deep			Shallow
Front Teat Placement	0.66	Apart			Close
Rear Teat Placement	0.77	Apart			Close
Teat Length	0.33	Short			Long