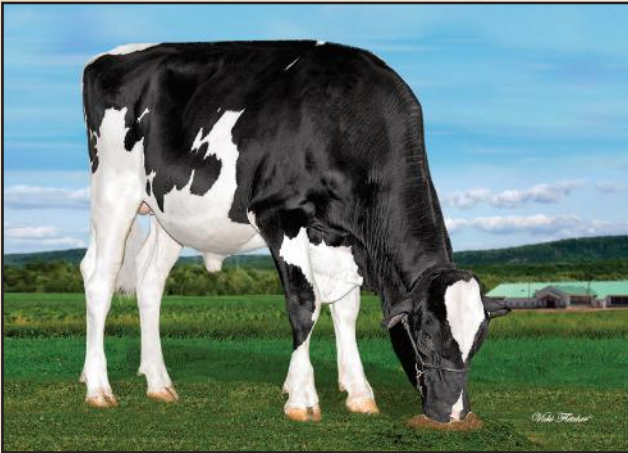


799H000024 *Hyden*

LIMITED-P



Reg: HOCANM13240050 / DOB: 07/20/2019 / RHA: 99% / BW POC A2A2 CDF CVF RDF BYF BLF DPF CNF / aAa: 432165



SIRE
COOMBOONA ZIPIT MIRAND-PP

DAM
HYDEN RAMBO LYRIC EX-91-2E
sired by OCD Kingboy Rambo
3-02 3x 305 d 13,244 Kg M 4.4%F 3.4%P

2ND DAM
HYDEN CAPITALGAIN LYRA EX-90-2E
sired by Stantons Capital Gain
07-04 3x 305 d 18,315 Kg M 4.1%F 2.9%P

3RD DAM
HYDEN DUPLEX LEXUS VG-88-3YR 3*
5-02 2x 305 d 15,887 Kg M 4.0%F 3.2%P

4TH - 9TH DAMS
EX-2E 6* X VG 21* X VG 4* X VG-87 24* X
Comestar Laurie Sheik VG-88 23* X EX 15*



LYDEN RAMBO LYRIC EX-91-2E
Dam of Limited-P

CANADIAN FIGURES					
Lifetime Performance		Rel 91%	Dtrs/ Herds 335/184	Functional Traits	
GLPI	+2977	Feed Efficiency	101	Daughter Fertility	94
PRO \$	\$497	Herd Life	100	Milking Speed	91
Production	Rel 96%	Mastitis Resistance	100	Milking Temperament	105
Milk	623 kgs	Metabolic Disease	99	Calving Ability	93
Fat	6 kgs -0.15%	Hoof Health	99	Dtr Calving Ability	100
Protein	1 kgs -0.15%	Lactation Persistency	104	Body Condition	93

Proof Date: Aug 2024		Type Reliability: 94%	Dtrs/Herds: 237/147	Data supplied by CDN	
Conformation	16	Poor			Excellent
Mammary	10	Poor			Excellent
Feet & Legs	14	Poor			Excellent
Dairy Strength	11	Poor			Excellent
Rump	11	Poor			Excellent
Udder Floor	0	Tilt			Reverse
Udder Depth	0	Deep			Shallow
Udder Texture	12	Fleshy			Soft
Median Suspensory	6	Weak			Strong
Fore Attachment	9	Weak			Strong
Front Teat Placement	12C	Wide			Close
Rear Attachment Height	8	Low			High
Rear Attachment Width	6	Narrow			Wide
Rear Teat Placement	9C	Wide			Close
Teat Length	4L	Short			Long
Foot Angle	10	Low			Steep
Heel Depth	9	Shallow			Deep
Bone Quality	11	Coarse			Flat
Rear Legs Side View	3C	Straight			Curved
Rear Legs Rear View	10	Hocked-in			Straight
Front Leg View	6K	Knock-kneed			Straight
Locomotion	9	Non-mobile			Mobile
Stature	8T	Short			Tall
Height at Front End	9	Low			High
Chest Width	0	Narrow			Wide
Body Depth	8	Shallow			Deep
Dairy Capacity	12	Non-angular			Angular
Loin Strength	6	Weak			Strong
Rump Angle	3L	High			Low
Pin Width	18	Narrow			Wide
Thurl Placement	2A	Back			Ahead

AMERICAN FIGURES					
Lifetime Performance		Functional Traits			
GTPI	+2250	Somatic Cell Score	2.85	Daughter Preg Rate	-0.9
NET MERIT	\$45	Productive Life	0.3	Sire Calving Ease	3.4%
Production	Rel: 92%	Daughter / Herds	383/213	Dtr Calving Ease	2.9%
Milk	604 lbs	Combined F&P	20 lbs	Sire Stillbirth	6.9%
Fat	11 lbs -0.05%	Cheese Merit	\$43	Dtr Stillbirth	6.6%
Protein	9 lbs -0.04%			Fertility Index	-0.82

Proof Date: Aug 2024		Type Reliability: 84%	Dtrs/Herds: 237/147	Data supplied by Holstein USA	
PTAT	2.87	Poor			Excellent
UDC	2.03	Poor			Excellent
FLC	1.19	Poor			Excellent
BSC	0.93	Poor			Excellent
Stature	2.75	Short			Tall
Strength	1.21	Weak			Strong
Body Depth	1.99	Shallow			Deep
Dairy Form	2.66	Coarse			Open Rib
Rump Angle	0.72	High			Sloped
Thurl Width	3.06	Narrow			Wide
Rear Legs-Side	0.93	Straight			Sickle
Rear Legs-Rear	1.72	Sickle			Straight
Foot Angle	1.80	Low			Steep
Feet & Legs Score	1.69	Low			High
F. Udder Attachment	2.46	Weak			Strong
Rear Udder Height	3.45	Low			High
Rear Udder Width	3.22	Narrow			Wide
Udder Cleft	2.04	Weak			Strong
Udder Depth	1.37	Deep			Shallow
Front Teat Placement	1.94	Apart			Close
Rear Teat Placement	2.19	Apart			Close
Teat Length	1.00	Short			Long