



799H000052 *Blondin*

ALPHA*RC

ET BW A1A1 RDC CDF CVF BYF BLF DPF CNF

Reg: HOCANM120345248 / DOB: 12/25/2020 / RHA: 99% / aAa: 423615 KODNR: 9-9016

SIRE
STANTONS ALLIGATOR

DAM
KCKK ARTIST ANA EX-92-4YR
sired by Stone-Front Artist
3-03 2X 305 d 10,550 Kg M 5.0%F 3.6%P

2ND DAM
MS APPLE ANARA-RED-VG-88 4*
sired by Blondin Integral
2-08 2x 305 d 9,977 Kg M 5.2%F 3.9%P

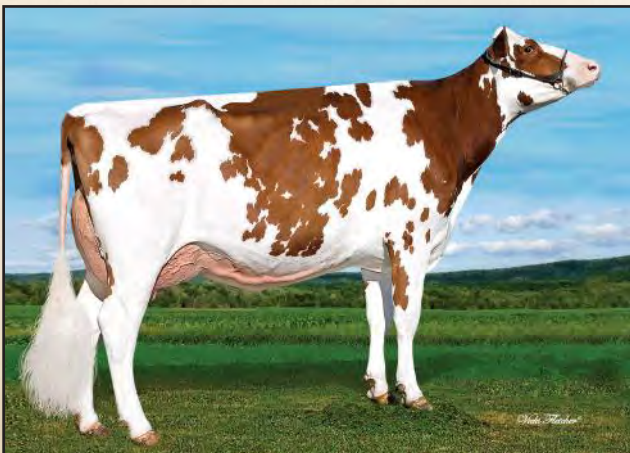
3RD DAM
KHW REGIMENT APPLE-RED-EX-96-4E-41* DOM
5-03 305 d 12,469 Kg M 5.0%F 3.9%P

NEXT DAMS
EX-95-2E-2* DOM X EX-93-3E DOM X EX-94-4E DOM
X D-R-A August-EX-96-4E DOM X EX-2E X EX-3E

Pris: 375
XX 680

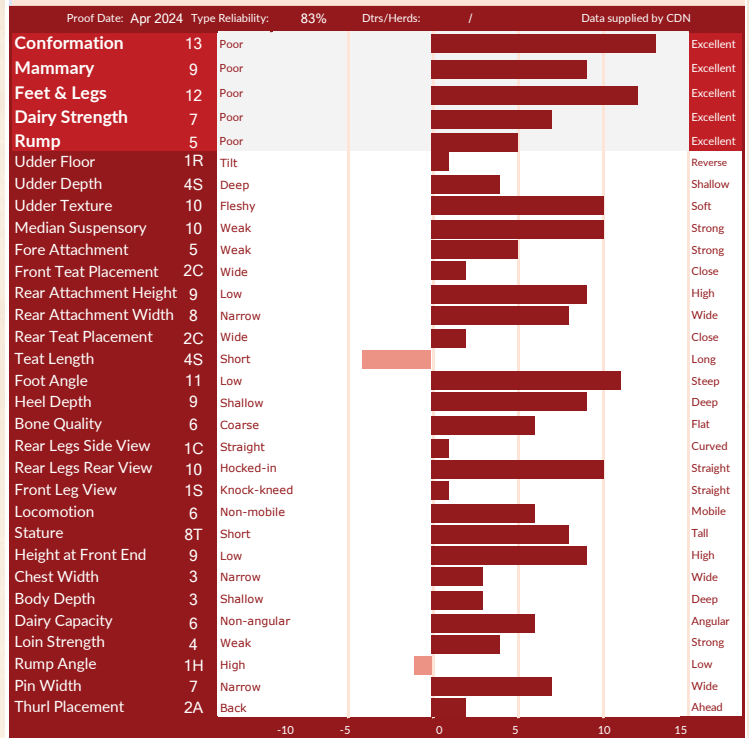


DAUGHTER BLONDIN ALPHA SALUZZA
Owned by Ferme Blondin, Laurent Lambert, Weavercroft & JP Proulx



MS APPLE ANARA-RED-VG-88
2nd Dam

CANADIAN FIGURES					
Lifetime Performance		Rel 82%	Dtrs/ Herds	Functional Traits	
GPA LPI	+3198	Feed Efficiency	98	Daughter Fertility	103
PRO \$	\$918	Herd Life	102	Milking Speed	99
Production	Rel 85%	Mastitis Resistance	104	Milking Temperament	99
Milk	228 kgs	Metabolic Disease	98	Calving Ability	98
Fat	27 kgs +0.17%	Hoof Health	101	Dtr Calving Ability	98
Protein	4 kgs -0.03%	Lactation Persistency	100	Body Condition	100



AMERICAN FIGURES					
Lifetime Performance		Functional Traits			
GTPI	+2283	Somatic Cell Score	2.96	Daughter Preg Rate	-1.6
NET MERIT	\$7	Productive Life	-1.0	Sire Calving Ease	2.8%
Production	Rel: 82%			Dtr Calving Ease	3.4%
Milk	501 lbs	Daughter / Herds	0/0	Sire Stillbirth	6.7%
Fat	25 lbs +0.02%	Combined F&P	36 lbs	Dtr Stillbirth	5.9%
Protein	11 lbs -0.02%	Cheese Merit	\$5	Fertility Index	-0.9

